



CSR Action Principles

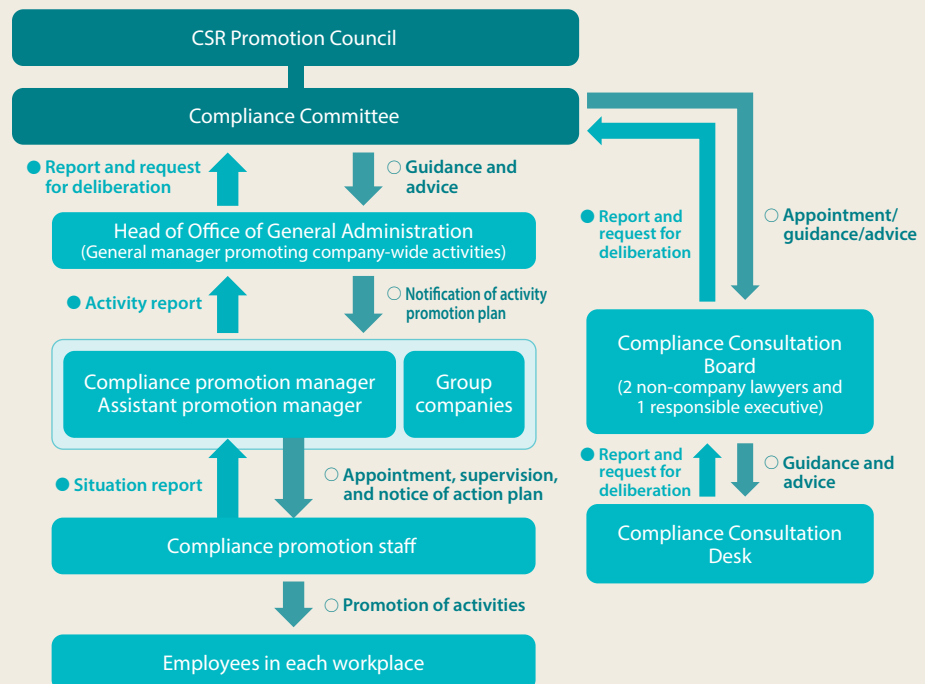
In all aspects of its business activities, the Kansai Electric Power Group will comply with all laws and regulations, internal rules and business ethics and will ensure Strict Enforcement of Compliance as the basis of our management. The Group as a whole will build a structure that should ensure actual practice thereof and will strive to maintain and improve such structure.

Promoting compliance activities with the entire group

Promoting compliance activities

In our company, the Legal Department oversees compliance activity promotion guided by the Compliance Committee, which is chaired by our president. The heads of every division and other corporate unit act as compliance promotion managers and undertake compliance activities in their units. Every workplace is autonomously implementing efforts led by their assigned compliance promotion staff.

Kansai Electric Power Group Compliance System



①

Number of cases handled by the Compliance Consultation Desk

• Fiscal 2014

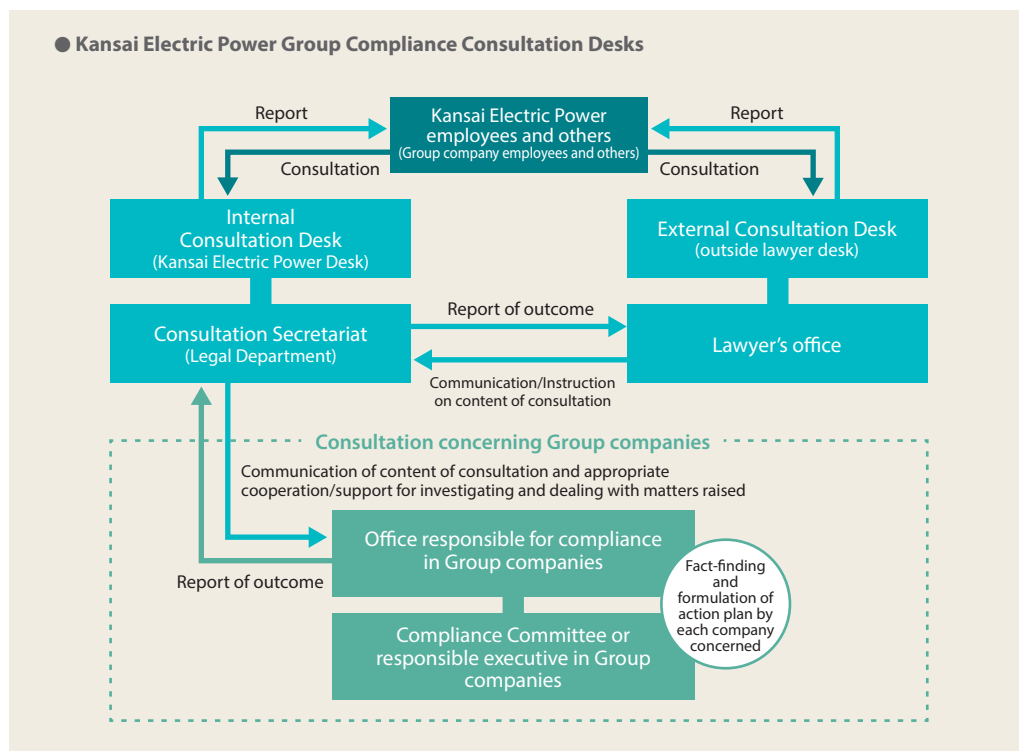
42

• Fiscal 2015

75

Compliance Consultation Desk^①

The Compliance Consultation Desk established by our company is available not only to employees of Kansai Electric Power Group companies but also to our contractors. This system enables us to collect a wider range of risk information. We are working to create an improved environment offering a more approachable service that can accept anonymous consultations and that employs female consultants, for example.



②

Number of activity units conducted with the theme of compliance risk

1,316 units



Results of company-wide employee CSR questionnaire (November 2015)

Did your compliance awareness change over the past year?

Improved:

82.6%

Further promoting compliance with effective activities^②

■ Each division initiatives

In fiscal 2015, along with our organization restructuring such as transition to a business division structure, each division undertook efforts that included identifying its own compliance risk based on its own business characteristics and past improper situations and holding workplace discussions on the themes of the serious compliance risks among these.

We also conducted discussion activities using materials such as compliance violation examples from both inside and outside the company as topics for the compliance promotion staff of each workplace. In addition, we implemented trainings that were appropriate to actual work according to the needs of each division. We are committed to developing additional initiatives to ensure effective compliance is firmly established.



Discussions with compliance promotion staff in the workplace

■ Supporting the initiatives of all group companies

In fiscal 2015, we held a Compliance Information Exchange Meeting for Group Companies and discussed compliance promotion structures and issues with each company. In addition, we also implemented On-site Compliance Trainings for group companies and worked to identify the issues of each company and support resolving them, for example. We intend to continue promoting compliance by supporting such measures among all Group companies in the future.



Compliance Information Exchange Meetings for Group Companies

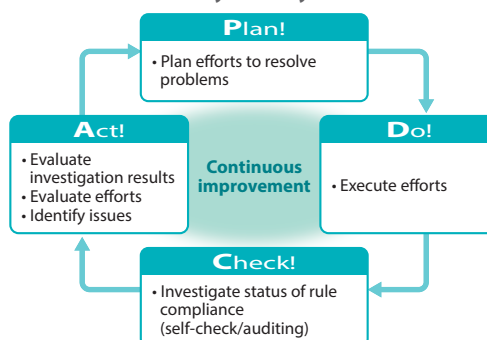
Information security initiatives

Policies

Our company possesses vast amounts of information, including customer information used for business activities and information used for the safe and stable supply of power. We believe that managing it appropriately is the duty of our company.

Moreover, considering the great expansion of threats from cyber attacks in recent years, for example, we are promoting information security management based on PDCA cycles and striving to further strengthen our efforts.

Information security PDCA cycle

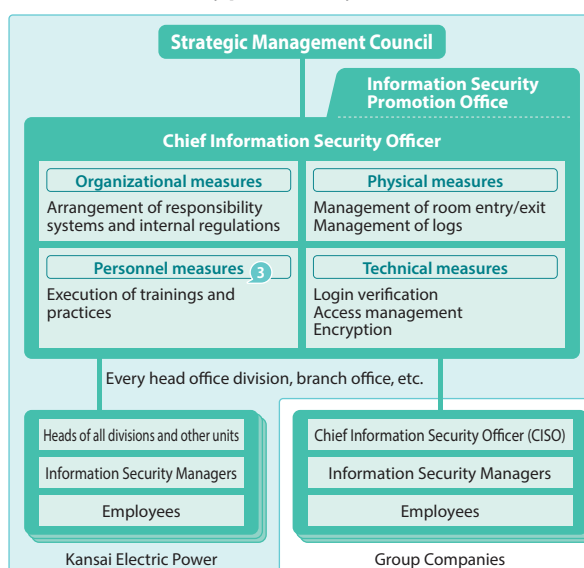


Kansai Electric Power Group information security promotion system

Our Strategic Management Council leads our corporate information security promotion system, and we deploy Information Security Managers in each workplace.

In addition, our group companies are undertaking independent efforts based on the Kansai Electric Power Group Information Security Guidelines, which are the information security guidelines for the entire group. With this and other guidance and support from our company, we are raising the security level of the entire group.

Information security promotion system



3

Information security trainings (conducted October–November 2015)

• Number of participants

19,098



Results of company-wide employee CSR questionnaire (November 2015)

Do you think you adequately understand the importance of information security?

Understand:
98.3%

Initiatives for protecting personal information

We are strictly following internal rules that we prepared based on the Personal Information Protection Law and various other laws and guidelines. Furthermore, we are continuously conducting trainings for employees to prompt them to reconfirm the importance of protecting personal information. In addition, we are strengthening our technical safety measures considering the personal information leaks that have occurred and other concerns of society.