

Consolidated Financial Highlights

The Kansai Electric Power Company, Incorporated and Consolidated Subsidiaries Fiscal Years Ending March 31	Billions of yen					Millions of US dollars*	
	2012	2013	2014	2015	2016	2016	
Operating revenues	¥ 2,811.4	¥ 2,859.0	¥ 3,327.4	¥ 3,406.0	¥ 3,245.9	\$ 28,803	
Operating income	(229.3)	(314.0)	(71.7)	(78.6)	256.7	2,277	
Net income attributable to shareholders of the parent for this fiscal year	(242.2)	(243.4)	(97.4)	(148.3)	140.8	1,249	
Total assets	7,521.3	7,635.1	7,777.5	7,743.3	7,412.4	65,777	
Net assets	1,529.8	1,278.1	1,213.1	1,060.2	1,201.8	10,664	
Operating cash flows	43.8	142.6	347.7	447.6	595.1	5,281	
Operating revenues from Group businesses (external sales)**	391.2	428.4	464.1	463.5	447.4	3,970	
Ordinary income from Group businesses**	52.8	62.9	49.1	62.7	67.4	598	
Per share data							
	Yen				US dollars		
Net income	¥ (271.12)	¥ (272.43)	¥ (109.01)	¥ (166.06)	¥ 157.59	\$ 1.40	
Cash dividends	60.00	0.00	0.00	0.00	0.00	0.00	
Net assets	1,689.73	1,406.53	1,330.48	1,159.53	1,319.33	11.71	
Major indicators							
	%						
Equity ratio	20.1	16.5	15.3	13.4	15.9		
Return on equity (ROE)	(14.6)	(17.6)	(8.0)	(13.3)	12.7		
Return on assets (ROA)***	(2.9)	(3.9)	(0.7)	(0.7)	3.9		
Electricity sales volume							
	Billion kWh						
	146.0	141.8	140.4	134.5	127.5		

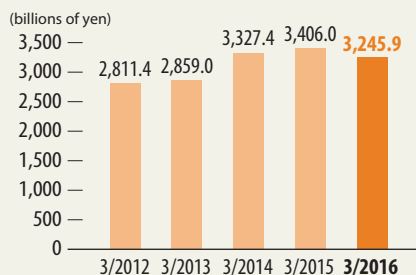
* The yen-dollar exchange rate of ¥112.69 = US\$1 as of March 31, 2016, is applied.

** Figures in this table are the simple sums of the respective results of consolidated subsidiaries prior to consolidated statement eliminations.

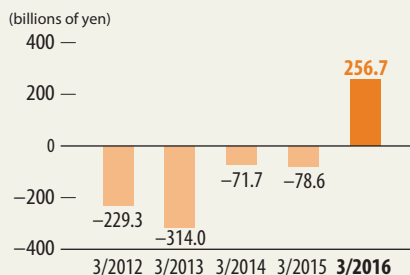
Figures in this table include a portion of gas supply, fuel sales and steam supply businesses, which are part of incidental businesses included in the non-consolidated financial statements.

*** ROA = Business profit (ordinary income plus interest expense) divided by total assets (average of period-start and period-end totals)

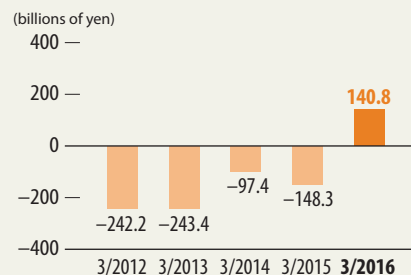
Operating Revenues



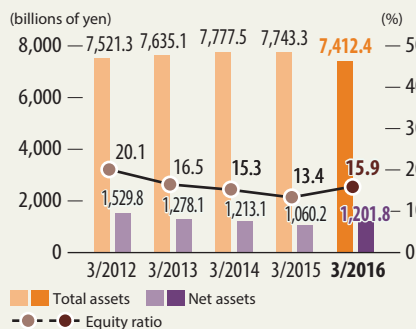
Operating Income



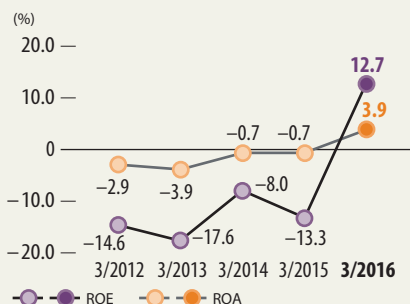
Net income attributable to shareholders of the parent for this fiscal year



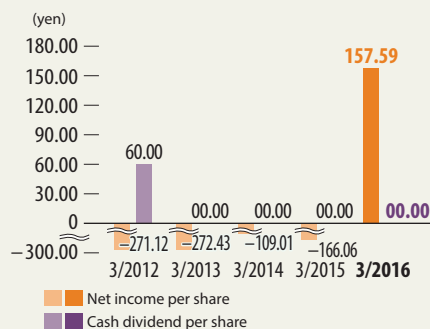
Total Assets, Net Assets, Equity Ratio



ROE, ROA



Net Income per Share / Cash Dividend per Share

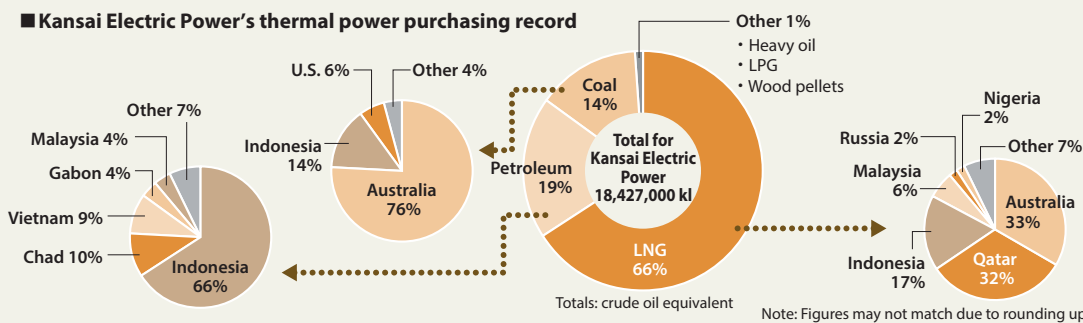


Business Overview and Main Supply Chains

As of March 31, 2016

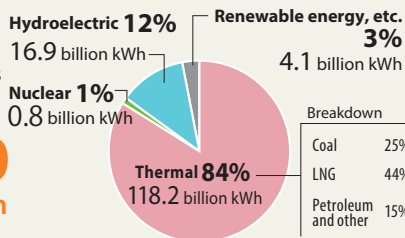
Fuel Procurement

■ Kansai Electric Power's thermal power purchasing record



Power Generation

■ Power sources
Total: 140.0 billion kWh



Notes: Percentages shown for generated power are the composition of Kansai Electric Power's total demand. Figures may not match due to rounding up.

■ Power generation facilities

Total: 36.573 GW

Breakdown	Power	Facilities
Thermal	19.408 GW	(12 facilities)
Hydroelectric	8.225 GW	(152 facilities)
Nuclear	8.928 GW	(3 facilities)
Renewable energy	11 MW	(3 facilities)

Notes: Figures may not match due to rounding up. This only includes company power generation facilities.

Transmission and Distribution

System map

■ Length of transmission lines (route length)

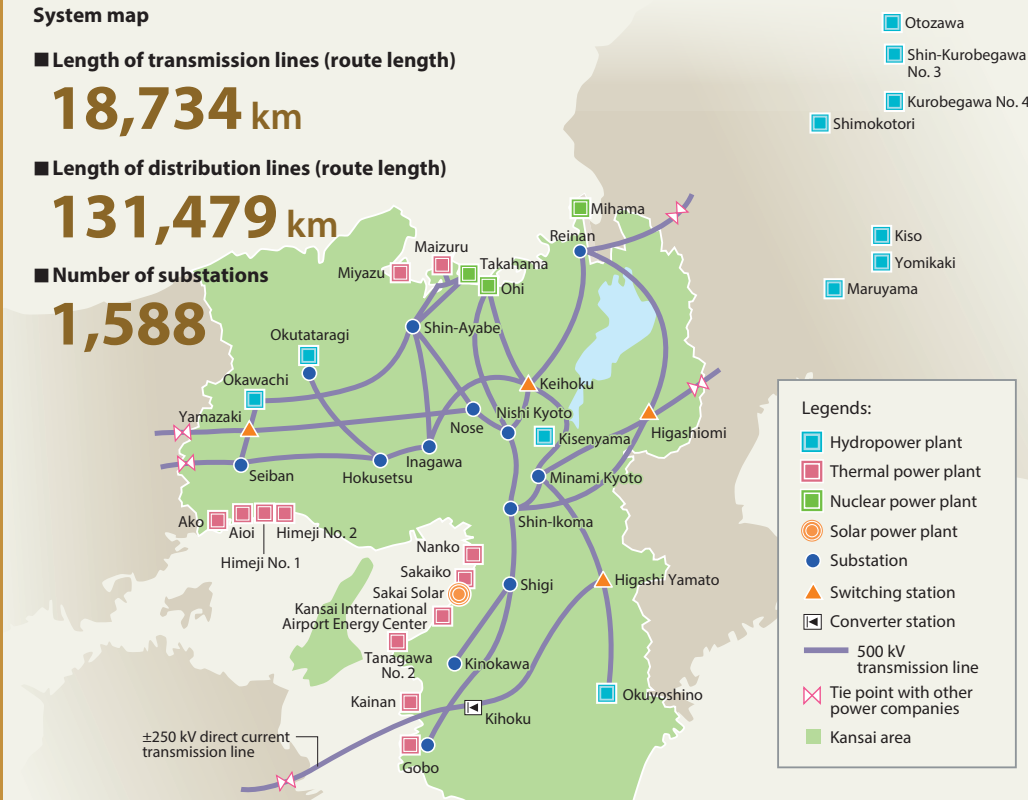
18,734 km

■ Length of distribution lines (route length)

131,479 km

■ Number of substations

1,588



Sales

■ Electricity sales

127.5 billion kWh

■ No. of customers

Lighting **12,709** thousand units

Power **998** thousand units
 (Excluding liberalized segments)

■ Gas/Heavy oil sales volume

(LNG equivalent)
750 thousand tonnes

■ External sales in group business

¥ 447.4 billion