

Efforts for regional stimulation

As customer and societal needs regarding energy have become increasingly diverse, Kansai Electric Power has been carefully monitoring trends to determine exact requirements. We seek to invigorate local economies with the goal of working with them as a valued partner to create the new future we envision.

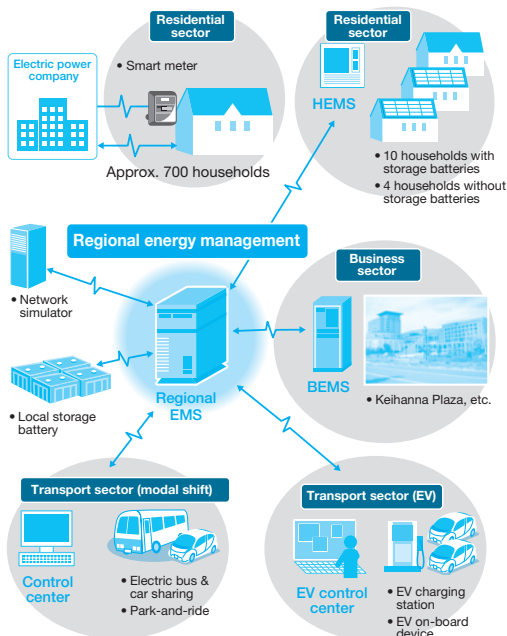
Contributing to the emergence of smart communities

To meet the emerging expectations of customers and society at large, Kansai Electric Power is participating in the Smart Community efforts of local governments and other local entities and developing initiatives using renewable energy. We are employing our accumulated expertise in the electric power industry and are engaged in a range of concrete initiatives to make this concept a reality.

For example, as part of the Smart Community initiative, we are actively participating in the Keihanna Eco-City Next-Generation Energy and Social Systems Demonstration Project in the Keihanna Science City, Kyoto prefecture, and the Project for Promoting Introduction of Smart Communities under Japan's Ministry of Economy, Trade and Industry.

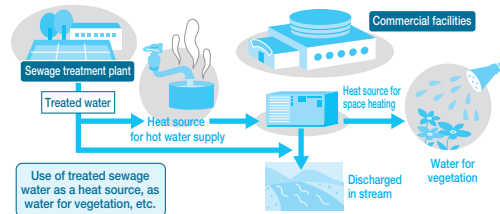
Examples of Smart Community Efforts

Keihanna Eco-City Next-Generation Energy and Social System Demonstration Project



Moreover, we are promoting renewable energy development initiatives such as the Keihanna Solar Power Plant and the town's goal of utilizing treated sewage water.

The town's concept of utilizing treated sewage water



Community development activities in urban areas of Osaka

Kansai Electric Power has been making both infrastructure and organizational contributions to community development activities in urban Osaka. These include our activities on Nakanoshima Island in Osaka, where our head office is located.

The Round Table on the Future of Nakanoshima was established in 2004 to examine prospects for further development and vitalization of Nakanoshima, with Kansai Electric Power serving as the organization's secretariat. The organization is currently promoting realization of the Nakanoshima urban renewal concept formulated in 2013 in collaboration with 30 enterprises (as of June 2014) and other entities with land rights in the district, as well as a range of other urban renewal activities such as holding study seminars and lectures on disaster preparedness.



Overview of Nakanoshima

Enterprise investment support activities

Given our desire to promote economic vitalization and sustainable development in local communities, Kansai Electric Power works in partnership with local governments and economic organizations to support customers wishing to open new business locations in the Kansai region. We publish the magazine *Community Information*, which contains information for companies nationwide considering local capital investments, including information on industrial promotion policies by local governments, available industrial complexes, and other advantages of establishing facilities in the Kansai region. We are continuing to work on connecting companies that have an interest in the Kansai area with local government authorities by making visits to those companies.

In the Kansai region, Kansai Electric Power Group has been leveraging its strength to contribute to local growth and vitalization.

Contributing as a member of society

Kansai Electric Power, an enterprise with roots in the region, is engaged in activities that enable us to contribute as a member of the local community. We pay careful attention to the needs of our customers and local communities and undertake various initiatives together with residents of the local community.

Inspection of electrical equipment at cultural properties

We work with local fire departments to prevent fires at temples, shrines, and other cultural properties, including community centers designated as disaster refuges, by inspecting electrical equipment. We search for short circuits and electrical wiring abnormalities and provide instructions to customers regarding the safe use of their electrical equipment.



▲ Inspecting electrical equipment at a community center designated as a disaster refuge in Himeji-shi, Hyogo prefecture

◀ Inspecting electrical equipment at the Shirayama Shrine in Moriguchi-shi, Osaka

Participating in cleanup activities with local residents

In addition to our activities with local communities, we are carrying out cleanup activities around our business locations, at tourist sites, and along coasts and rivers, centering on Kansai Electric Power Group Environment Month (June) and Customer Appreciation Month (November).



▲ Cleanup at Suganuma Gassho-zukuri village in Nanto-shi, Toyama prefecture

◀ Yamato River cleanup campaign

Support for traditional cultural preservation and regional events

To contribute to regional development and vitalization, we are working to support traditional culture and regional events rooted in local communities in a variety of ways.



▲ Voluntary support for the Sanda International Masters Marathon



◀ Voluntary participation in the Aoi Festival parade

Collabo Art 21 exhibit of art by handicapped persons

Since 2001, Kansai Electric Power has been holding the Collabo Art 21, an exhibit that provides an opportunity for individuals with disabilities to display their works. Visitors can appreciate the art and sense the potential of the artists. Works selected for exhibiting can also be seen on our website.



Exhibition of selected works (part of sponsorship activities for Persons with Disabilities Week)

Support for employees engaged in social contribution activities

To support employees engaged in community activities or volunteer programs, we encourage use of volunteer time-off and other programs. We also provide information on volunteer activities on our intranet website and other channels.

Support systems and their results

Volunteer time-off program

Results (FY 2013): 85 instances totaling 209 days

This system allows employees that participate in activities that contribute to society and meet fixed conditions to take 50% or 100% of the time devoted to such activities as specially recognized time off, up to an annual limit.

Volunteer sabbatical program

Utilized by 16 employees from FY 1992 to FY 2013

This program enables employees who have worked for the company for five years or more to take up to a year off in order to participate in long-term volunteer work for a public social welfare organization. In the case of the Japan Overseas Cooperation Volunteers, the maximum sabbatical period is two years and six months.