

# 3 Proactive Contributions to Development of Local Communities

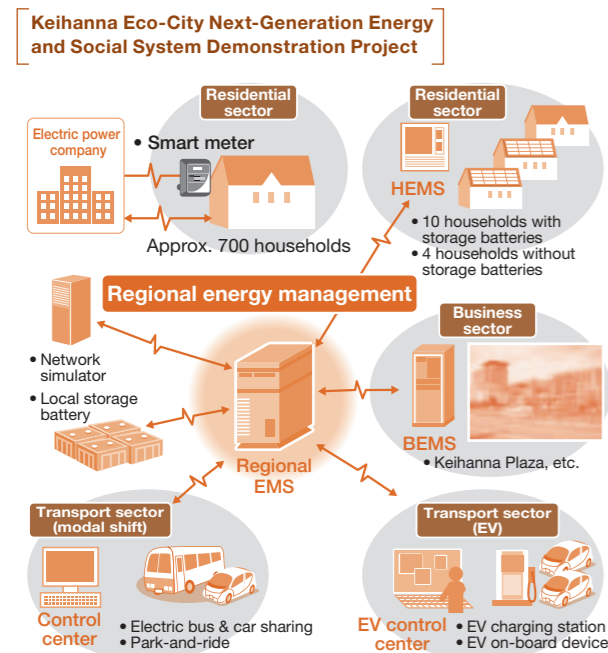
## Efforts for regional stimulation

As customer and societal needs surrounding energy become increasingly diverse, Kansai Electric Power is listening carefully to identify what exactly is required. We are promoting efforts to vitalize local economies, with the goal of working together as a good partner to local communities to envision and create the future.

### Activities relating to smart community building

To meet new expectations on the part of customers and society, Kansai Electric Power is supporting the Smart Community efforts of local government and other local entities. We utilize our accumulated electric power industry expertise and are engaged in a range of concrete activities to make this concept a reality. For example, we are actively participating in promotion of the Keihanna Eco-City Next-Generation Energy and Social Systems Demonstration Project in the Keihanna Science City, Kyoto Prefecture, and the Ministry of Economy, Trade and Industry's Project for Promoting Introduction of Smart Communities.

#### Examples of Smart Community Efforts



### Community development activities in urban areas of Osaka

Kansai Electric Power has been making both infrastructure and organizational contributions to community development activities in urban Osaka. These include our activities on Nakanoshima Island in Osaka, where our head office is located.

The Round Table on the Future of Nakanoshima was established in 2004 to examine prospects for further development and vitalization of Nakanoshima, with Kansai Electric Power serving as the organization's secretariat. The organization is currently promoting realization of the Nakanoshima urban renewal concept formulated in 2012 in collaboration with 29 enterprises (as of March 2013) and other entities with land rights in the district, as well as a range of other urban renewal activities such as holding study seminars and lectures on disaster preparedness.



Overview of Nakanoshima

### Enterprise investment support activities

Given our desire to promote economic vitalization and sustainable development in local communities, Kansai Electric Power works in partnership with local governments and economic organizations to support customers wishing to open new business locations in the Kansai region. We publish the magazine *Community Information*, which contains information for companies nationwide considering local capital investments, including information on industrial promotion policies by local governments, available industrial complexes, and other advantages of establishing facilities in the Kansai region. We are continuing to work on connecting companies that have an interest in the Kansai area with local government authorities by making visits to those companies.

In the Kansai region, Kansai Electric Power Group has been leveraging its strength to contribute to local growth and vitalization.

## Contributing as a member of society

As an enterprise with roots in the region, Kansai Electric Power wants to be of service to customers and local communities and is therefore engaged in activities to contribute to local communities. Customer and local community expectations toward Kansai Electric Power are diverse across the region, but we pay careful attention to each need and promote efforts with residents as a member of the local community.

### Electrical equipment inspections for cultural properties and social welfare facilities

We work with local fire departments to prevent fires at temples, shrines, and other cultural properties by inspecting electrical equipment. We search for short circuits and electrical wiring abnormalities and provide instructions to customers regarding the safe use of their electrical equipment. We also perform similar equipment checkups at the homes of elderly people who live alone, and at social welfare facilities.



Electrical equipment inspection for Susa Shrine (Arita, Wakayama Prefecture)



Electrical equipment inspection for housing for elderly persons

### Cleanup activities in cooperation with local communities

In addition to our activities with local communities, we are carrying out cleanup activities around our business locations, at tourist sites, and along coasts and rivers, centering on Kansai Electric Power Group Environment Month (June) and Customer Appreciation Month (November).



Himeji Castle lighting cleanup



Lake Biwa coastal cleanup

### Support for traditional cultural preservation and regional events

We are working to support traditional culture and regional events rooted in local communities in a variety of ways, to render service for regional development and vitalization. For example, employees at our Nara branch are participating in the Nara Marathon as volunteers.



Voluntary support for the Nara Marathon



Participation in the Aoi festival parade

### Collabo Art 21 exhibit of art by handicapped persons

Since 2001, Kansai Electric Power has been holding the Collabo Art 21, an exhibit that provides an opportunity for individuals with disabilities to display artworks for the appreciation of others. Each year the exhibit receives large numbers of entries, and to date over 10,000 works have been submitted. Works selected for exhibiting can also be seen on our website.

Exhibition of selected works (part of sponsorship activities for Persons with Disabilities Week)



### Support for employees engaged in social contribution activities

To support employees engaged in community activities or volunteer programs, we encourage use of volunteer time-off and other programs. We also provide information on volunteer activities through such channels as in-house publications.

#### Support systems and their results

**Volunteer time-off program**  
Results (FY 2012): 97 instances totaling 240.5 days

This system allows employees that participate in activities that contribute to society and meet fixed conditions to take 50% or 100% of the time devoted to such activities as specially recognized time off, up to an annual limit.

**Volunteer sabbatical program**  
Utilized by 16 employees from FY 1992 to FY 2012

This program enables employees who have worked for the company for five years or more to take up to a year off in order to participate in long-term volunteer work for a public social welfare organization. In the case of the Japan Overseas Cooperation Volunteers, the maximum sabbatical period is two years and six months.