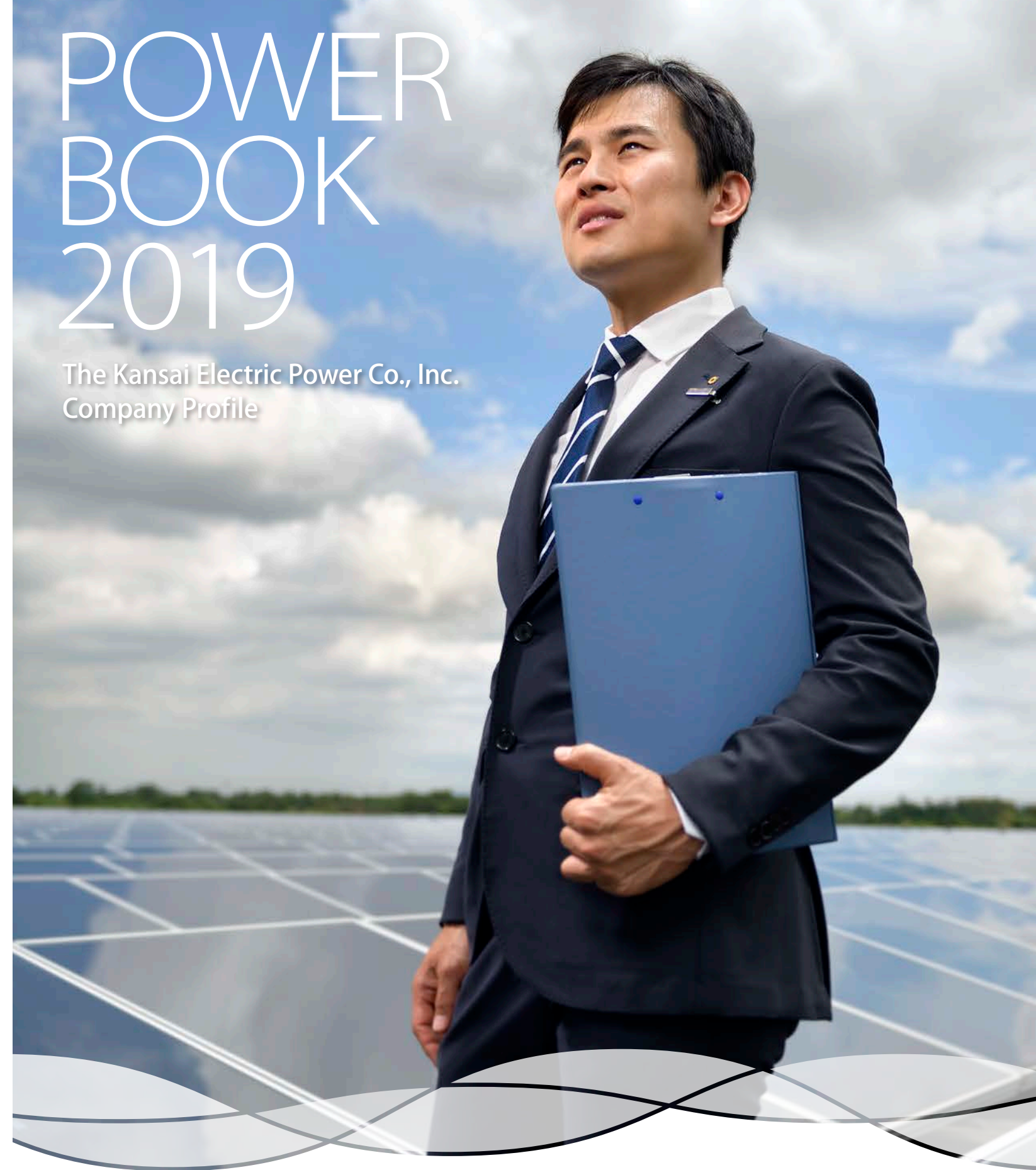


power with heart

We wish to be a source of power for our customers and communities by serving them with sincerity and passion.

POWER BOOK 2019

The Kansai Electric Power Co., Inc.
Company Profile



Message from the President

The business environment of our corporate group has been changing drastically not only due to fierce competition in the energy market but also due to the diverse needs of our society and customers. In every period of time, however, we firmly believe that the “trust” we receive from all the people in our communities is always the foundation of our business and our precious asset as well.

All of our group companies are fully committed to being the permanent choice of our customers and earning the trust mentioned above. As a leading company in the energy sector in Japan, we continue to supply electricity safely and stably. We are also determined to contribute to the realization of a sustainable society in the future by actively taking on challenges, including creating new value through innovation.

By approaching the views and feedback of our customers, each member of our group companies offers services with sincerity and passion, keeping our brand statement “power with heart” in mind. Looking to the future, we will advance diligently with continuing to serve our customers and society as our mission. We will keep on going forward into the future and fulfill our mission, “continuing to serve our customers and communities.”

We ask all of you to continue to provide your unchanging support and encouragement in the future.



Shigeki Iwane
Shigeki Iwane
President and Director

Brand Statement

The Kansai Electric Power Group’s promise to its customers and communities

power with heart

Meaning in the brand statement

The brand statement “power with heart” expresses our wish to be a source of power for our customers and communities by serving them with sincerity and passion.

The Kansai Electric Power Group Philosophy System



Management Philosophy

By giving top priority to safety and fulfilling social responsibilities as the axis of business management and upholding our mission of “continuing to serve our customers and communities,” we at the Kansai Electric Power Group will realize a bright, affluent future and keep close relationships with our customers and communities into the future.

Kansai Electric Power Group Vision

What we aim to be in the future
We will provide a wide range of safe, comfortable and convenient services from a viewpoint of our customers and business partners, and gain their trust to be selected as the best partner in everyday life and business so we keep growing at home and abroad while fulfilling our resolve to play expected role as Japan’s leading company in the energy sector.

Our policies

We will work to do the following based on our Guidelines for Action.

- Delivering services from the customer’s perspective
- Being selected as the best partner and continuing to grow
- Fulfilling expected role as Japan’s leading company

Guidelines for Action

Based on the concept of valuing people, the Kansai Electric Power Group will contribute to sustainable development of communities through fair business activities. Each one of our directors and employees will demonstrate a “sense of mission” and “spirit of challenge” which have been cultivated so far and give our best in our duties as a good member of society and also fulfill the following fundamental responsibilities.

Fundamental Responsibilities

- Give top priority to ensuring safety.
- Surely implement CSR.
- Keep changing to accomplish our abiding mission.

Health and Productivity Management Declaration

The Kansai Electric Power Company, in order to fulfill our mission, “continuing to serve our customers and communities,” will promote the maintenance and enhancement of our employees’ physical and mental health as well as the improvement of the quality of their lives by making employees’ health one of the pillars on our corporate management.

We will also implement working practices which place an emphasis more on value creation than the amount of work time, boost productivity, eliminate longer working hours, promote workplace diversity, and realize dynamic innovation through human-capacity reform to further improve effectiveness of our health management.

Based on our belief that we value people, we will continue to promote the advancement of employees’ health and contribute to “the realization of a bright and affluent future.”



Comprehensive energy business

We seek to establish a solid position as a leading company in the energy sector in Japan by expanding our reach from existing electricity and gas businesses to encompass new energy businesses with utilizing the technological expertise and other assets we have cultivated, and by accelerating efforts toward overall optimization as a comprehensive energy business.

Electricity supply

As we work to lower the carbon intensity of the electric power supply with nuclear power and renewable energy sources as our two wheels, we aim to create a power structure with a good S+3E* balance. Moreover, we will provide customers with a wide range of “safe, comfortable and convenient” as well as economical energy services.

*Safety + Energy Security, Economy and Environmental Conservation

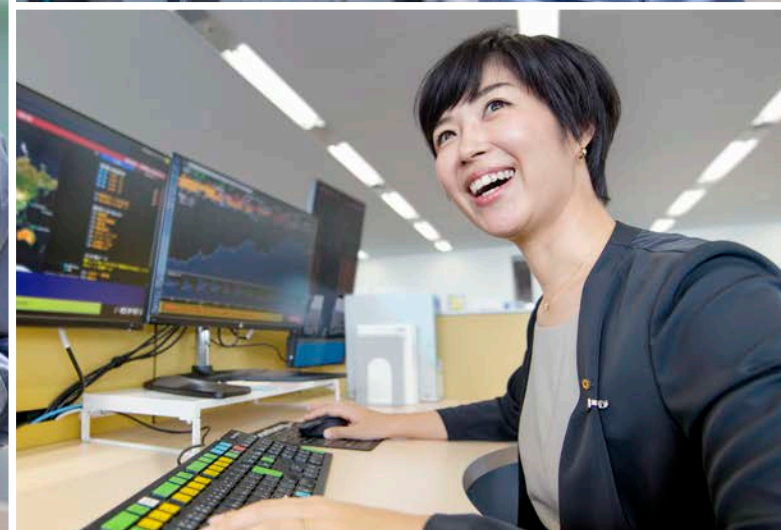
Gas supply

In addition to gas sales to industrial and commercial facility customers, we have been selling city gas (Kanden Gas) to households, retail stores and other customers since April 2017. As we provide such services as these that meet the needs of our customers, we are securely implementing gas safety maintenance services as well.

Transmission and distribution business

In addition to continuing to guarantee neutral and fair transmission and distribution businesses and provide customers with safe and stable power at low cost, offering appealing power system utilization services that can be used securely as the foundation, we will create new services in order to pursue the future growth, and advance together with local communities. Furthermore, in order to assure stable supply from a neutral and fair stance, we are maintaining the balance of supply and demand in the Kansai area, as well as constructing and maintaining transmission and distribution facilities.

(On April 1, 2020, we will separate transmission and distribution business, and establish Kansai Transmission and Distribution, Inc. which undertakes the business.)



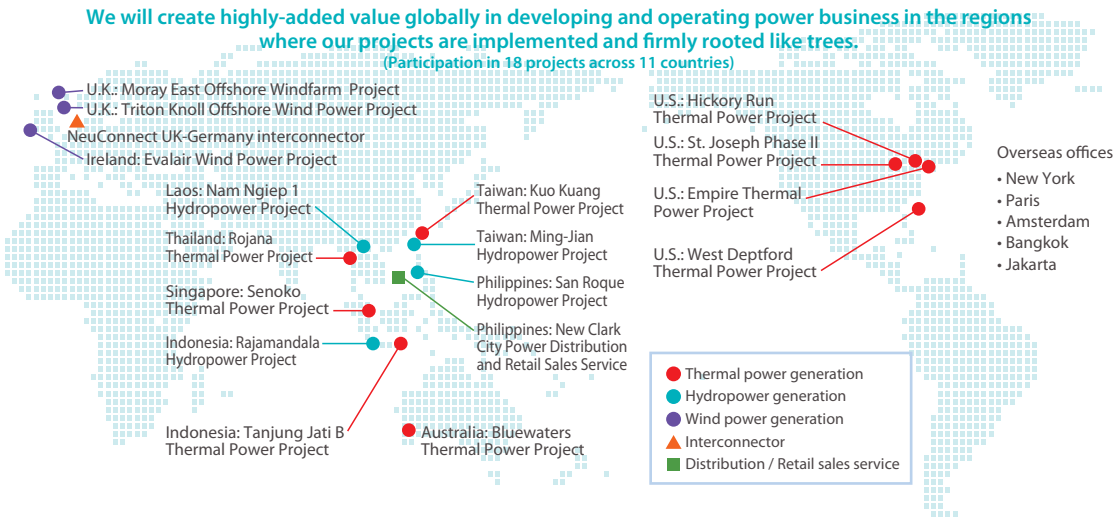
Overseas power business and international contribution

We have participated in power generation and transmission projects across 11 countries worldwide including Asia, Europe and the U.S. by utilizing the experience and expertise cultivated in our international business for more than 20 years.

In developing countries, we have been undertaking international cooperation and contribution activities through consulting and workshops with regard to their power infrastructure improvement and development.

Utilizing our overseas bases established in Europe, the U.S. and Asia, we are also exploring to create new business opportunities.

Utility business models are now in a perpetual transformation due to global megatrends such as SDGs, ESG and decarbonization. By getting a quick and accurate grasp of such changes in the energy business, we are committed to expanding into new fields of business and exploring new business opportunities.



Information and telecommunications business

We provide "eo Optical Fiber" fiber to the home (FTTH) services for Internet, telephone and television with names "eo Optical Fiber Internet," "eo Optical Fiber Telephone" and "eo Optical Fiber Television," utilizing our own optical fiber network with high speed and reliability. We also offer "mineo" cell phone services. Together with these, we are providing new services and added value comprehensively to meet customer needs, including digitalization and IoT services.



Life / Business solution business

As the best partner in life and business, we provide services that are useful in a variety of customer daily life and business situations, such as home security, health care and other services for individuals and a range of services for businesses, including leasing and temporary employee placement. We are also advancing business related to real estate, with the development of condominiums and commercial buildings that consider energy conservation.

New business

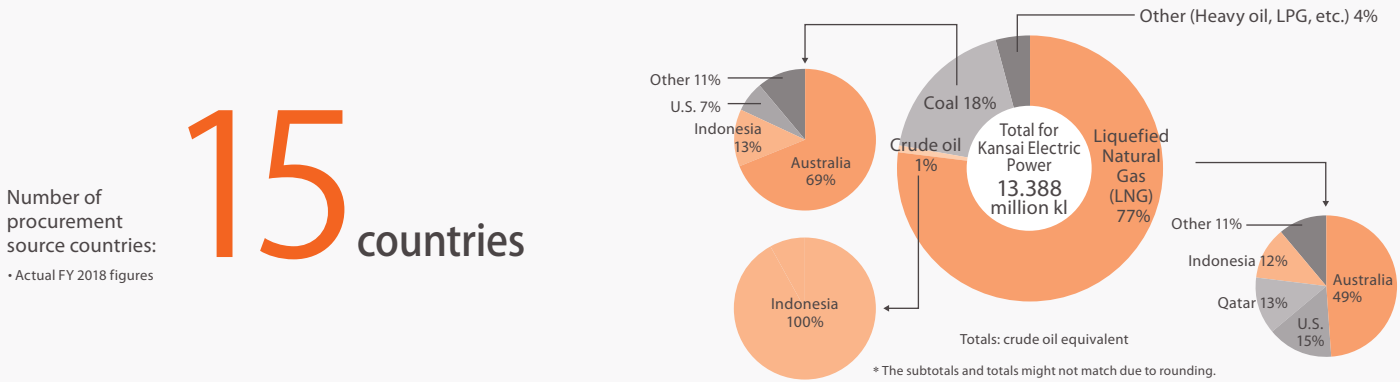
We will continue to create and provide new businesses and services maximizing the comprehensive strengths of our group. Examples of these include maintenance and inspection of facilities using drones, and remote monitoring services for power plants using AI and IoT technologies. We will strive to expand our business fields boldly, seeking new growth possibilities.



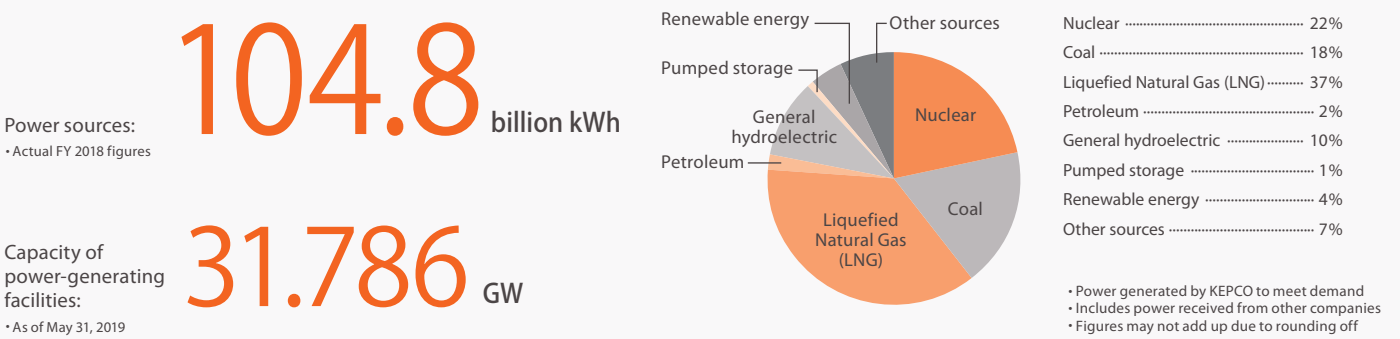
The Business of Kansai Electric Power (KEPCO) in Figures

Comprehensive energy business

Fuel procurement



Power generation



Capacity of power-generating facilities (breakdown by power source)

Thermal power	16.966 GW	(11 facilities)
Hydroelectric power	8.230 GW	(152 facilities)
Nuclear power	6.578 GW	(3 facilities)
Renewable energy	0.011 GW	(3 facilities)

• KEPCO power-generating facilities only
• Figures may not add up due to rounding off

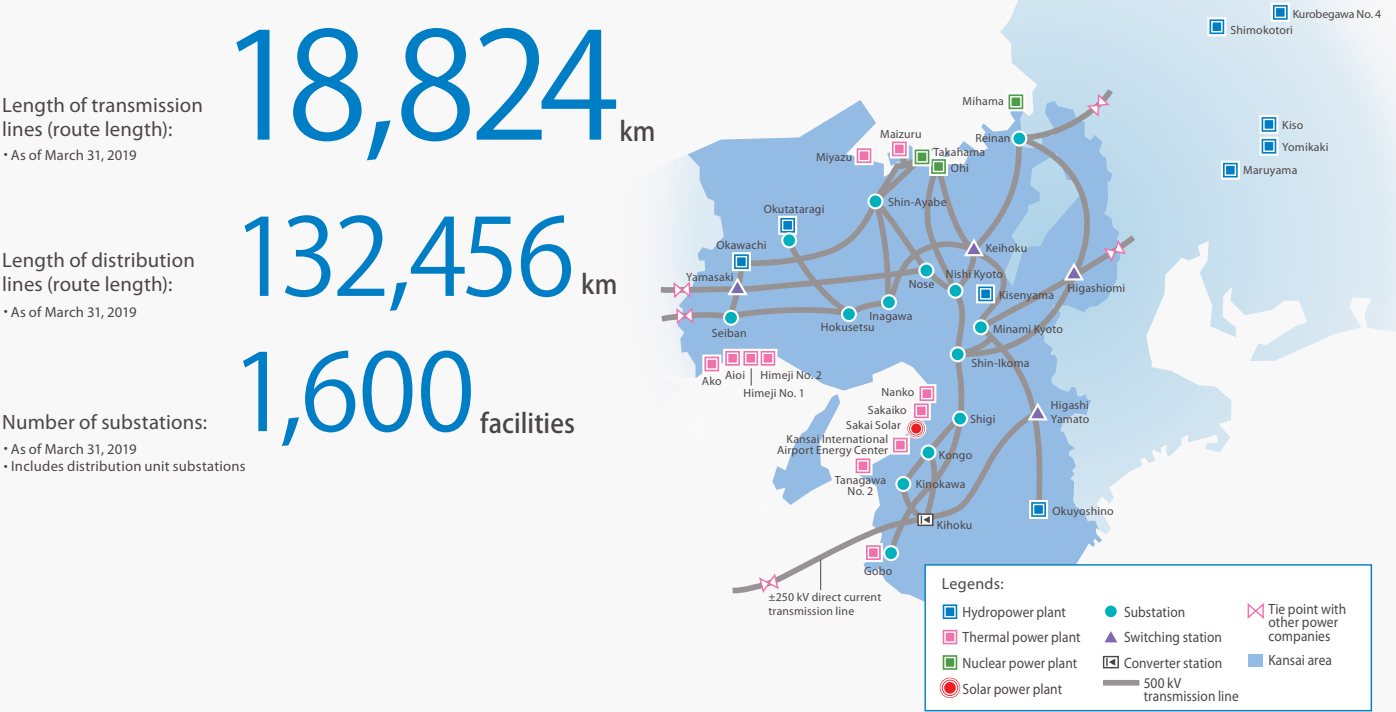
Sales



Transmission and distribution business

On April 1, 2020, we will separate transmission and distribution business, and establish Kansai Transmission and Distribution, Inc. which undertakes the business.

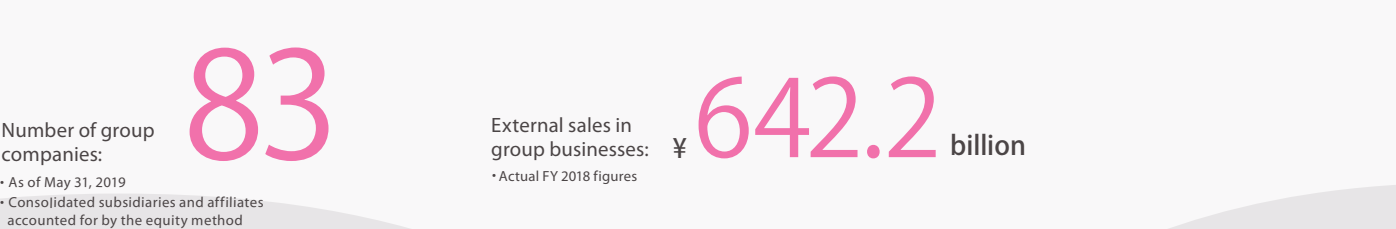
Transmission and distribution



International business



Group businesses



Corporate Information

Outline

(As of March 31, 2019)

Company name:	The Kansai Electric Power Company, Incorporated
Head office:	3-6-16 Nakanoshima, Kita-ku, Osaka 530-8270, Japan
Date of establishment:	May 1, 1951
Paid-in capital:	¥489.3 billion
Total assets:	¥6,404.5 billion (non-consolidated), ¥7,257.3 billion (consolidated)
Number of common shares issued:	938,733 thousand
Number of shareholders:	279,489
Operating revenues:	¥2,797.1 billion (non-consolidated), ¥3,307.6 billion (consolidated)
Retail electricity sales volume:	117.8 billion kWh
Number of employees:	18,884 (working employees, excluding employees on temporary transfers and leaves)

Directors and Auditors

(As of June 21, 2019)

Chairman and Director	Makoto Yagi*
President and Director	Shigeki Iwane*
Directors, Executive Vice Presidents	Yoshihiro Doi* Takashi Morimoto* Toyokazu Misono* Koji Inada* Ikuo Morinaka*
Directors, Managing Executive Officers	Yasuji Shimamoto Takao Matsumura
Outside Directors	Noriyuki Inoue Takamune Okihara Tetsuya Kobayashi Hisako Makimura
Audit & Supervisory Board Members	Yasuhiro Yashima Yasushi Sugimoto Yukishige Higuchi
Outside Audit & Supervisory Board Members	Tsutomu Toichi Fumio Otsubo Shigeo Sasaki Atsuko Kaga

* Indicates status as representative director

Executive Officers

(As of June 21, 2019)

Managing Executive Officers	Susumu Yamaji Nozomu Ushiro Mikio Matsumura Takashi Fukuda Yoshihide Hirota Hiroshi Nakajima Yukio Kawasaki Satoshi Suzuki Shigeki Otsuka Nobuhiro Nishizawa Niichiro Kitamura Tatsushi Okada Naoki Naito
-----------------------------	---

Note: Excludes those serving concurrently as directors and executive officers

Capacity of Power-generating Facilities

(As of May 31, 2019)

Thermal power	11 facilities	16,966 GW
Hydropower	152 facilities	8,230 GW
Nuclear power	3 facilities	6,578 GW
Renewable energy	3 facilities	0.011 GW
Total	169 facilities	31.786 GW

* KEPCO power-generating facilities only

* Figures may not add up due to rounding off

Group Companies

(Consolidated subsidiaries and affiliates accounted for by the equity method)

(As of May 31, 2019)

Consolidated subsidiaries 79 companies	Information and telecommunications (IT)
Comprehensive energy / Transmission and distribution business	OPTAGE Inc. Kanden Systems Inc. K4 Digital Co., Ltd. Five other companies
Kansai Transmission and Distribution, Inc. Kanden Energy Solution Co., Inc. SAKAI LNG Corp. Kanden Engineering Corp. ECHIZEN ENELINE CO., INC. NIHON NETWORK SUPPORT CO., LTD. Kanden Plant Corp. Kanden E House Co., Ltd. The Kurobe Gorge Railway Co., Ltd. Aioi Bioenergy Corporation Institute of Nuclear Safety System, Inc. NEWJEC INC. Next Power Company Kanden Power-Tech Corp. Nuclear Engineering, Ltd. THE GENERAL ENVIRONMENTAL TECHNOS CO., LTD. The Kanden Services Co., Inc. Osaka Bioenergy Co., Ltd. KANDEN GAS SUPPORT CO., INC. Fukui City Gas Co., Ltd. KE Fuel International Co., Ltd. Biopower Kanda LLC LNG EBISU Shipping Corporation LNG FUKUROKUJU Shipping Corporation LNG JUROJIN Shipping Corporation LNG SAKURA Shipping Corporation Kansai Electric Power Holdings Australia Pty Ltd Kansai Electric Power Australia Pty Ltd Kansai Sojitz Enrichment Investing S.A.S. KE Fuel Trading Singapore Pte Ltd. Kansai Energy Solutions (Thailand) Co., Ltd. KPIC Netherlands B.V. KPIC USA, LLC Eight other companies	Life / Business solution business
	Kanden Joy Life Co., Ltd. Kanden Realty & Development Co., Ltd. Clearpass Co., Ltd. KANDEN Security of Society, Inc. KANSAI Medical Net Co., Inc. Kanden L-Heart Co., Inc. Kanden Facilities Co., Ltd. Kanden Life Support Co., Ltd. Kansai Electron Beam Co., Ltd. Kanden CS Forum Inc. Kanden Office Work Co., Inc. The Kanden L & A Co., Ltd. KANDEN AMENIX Corp. K4 Ventures GK Sixteen other companies
	Affiliates accounted for by the equity method Four companies
	Comprehensive energy / Transmission and distribution business
	JAPAN NUCLEAR FUEL LIMITED KINDEN CORPORATION ENEGATE Co., Ltd. San Roque Power Corporation

