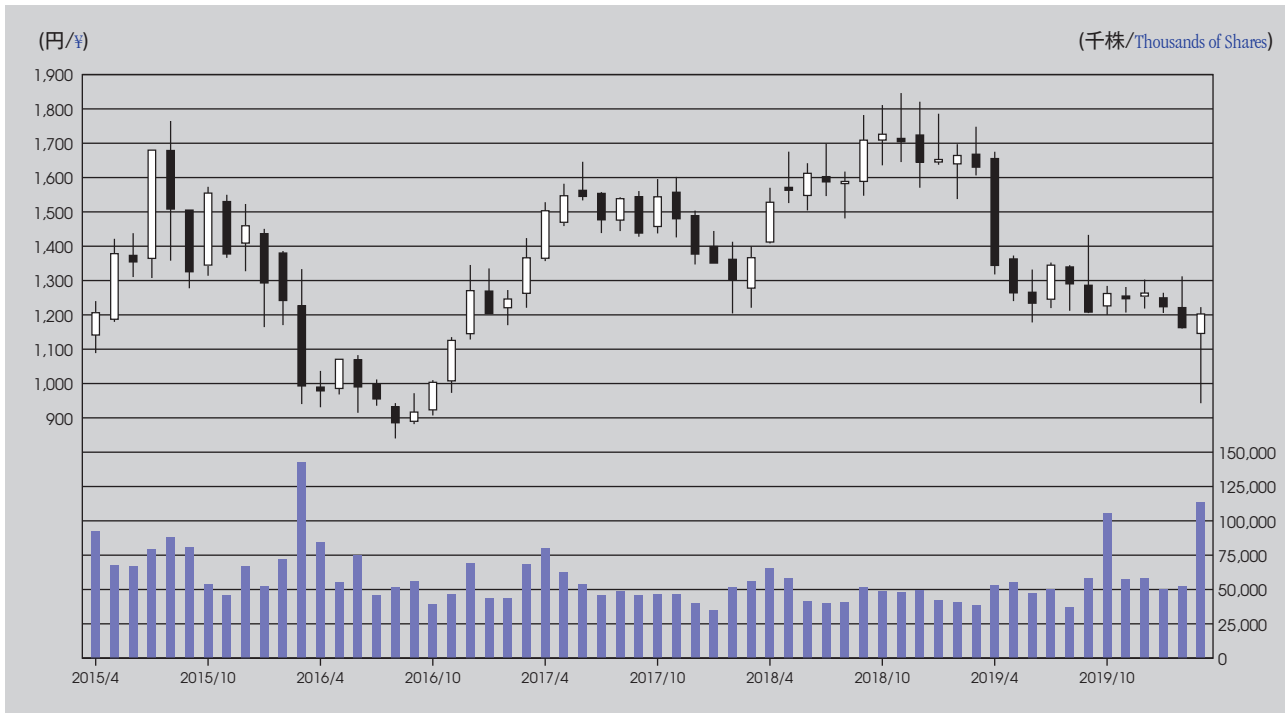


STOCK INFORMATION 株式情報

Stock Prices and Trading Volume

株価・出来高の推移

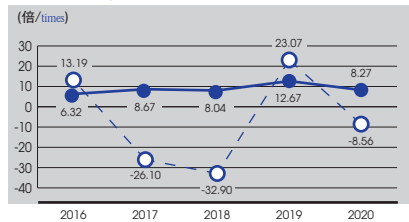


	2016	2017	2018	2019	2020	
時価総額 (十億円) (Billion ¥)	935.6	1,283.2	1,283.2	1,532.0	1,129.7	
Market Value (Billion \$)	8.8	12.1	12.1	14.4	10.3	
年間株価高低 (円)	高 High	1,768.00	1,426.00	1,650.00	1,849.00	1,678.00
High and Low for The Year (¥)	低 Low	945.00	841.60	1,205.00	1,412.00	942.40

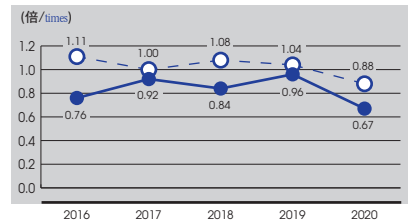
Stock Ratios

株式指標 (連結) Consolidated

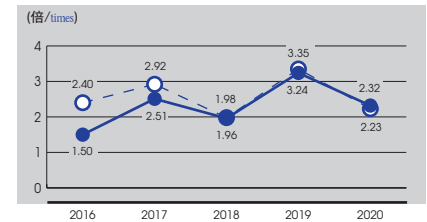
Price Earnings Ratio (PER) 株価収益率



Price Book-Value Ratio (PBR) 株価純資産倍率 *1

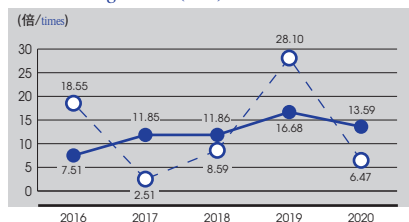


Price to Cash Flow Ratio (PCFR) 株価キャッシュフロー倍率 *2

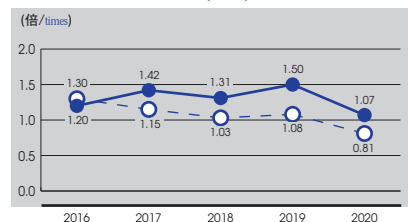


株式指標 (単独) Non-Consolidated

Price Earnings Ratio (PER) 株価収益率



Price Book-Value Ratio (PBR) 株価純資産倍率 *1



● KANSAI ELECTRIC POWER 関西電力
○ Average of Nine Utilities 9電力平均

* 年度末株価による
* Stock Price as of book closing date, March 31

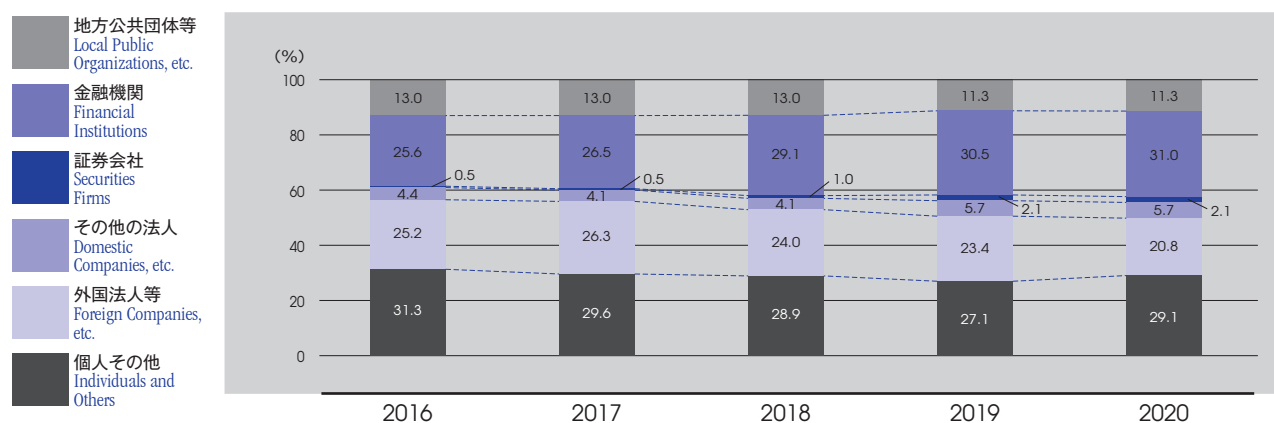
*1 株価(期末) / 1株当たり純資産額
*1 Price / Equity per Share

*2 株価(期末) / 1株当たり営業キャッシュ・フロー
*2 Price / Operating Cash Flow per Share

Numbers of Shares

所有者別持株数

	株式数 (千株)		Number of Shares (thousand)		
	2016	2017	2018	2019	2020
地方公共団体等 Local Public Organizations, etc.	121,353	121,353	121,353	105,892	105,890
金融機関 Financial Institutions	239,598	247,958	272,473	285,119	289,721
証券会社 Securities Firms	4,707	4,562	8,901	19,364	19,964
その他の法人 Domestic Companies, etc.	41,489	38,273	37,885	53,043	52,999
外国法人等 Foreign Companies, etc.	235,425	245,879	224,760	218,558	194,958
個人その他 Individuals and Others	292,574	277,221	270,002	253,481	271,980
合計 Total	935,145	935,246	935,375	935,457	935,511
別掲:単元未満株式の状況 Provided separately: Status of shares less than one unit	3,588	3,487	3,358	3,277	3,222



	2016	2017	2018	2019	2020
株主数 (名) Number of Shareholders	325,370	306,169	293,635	203,293	219,970

Major Shareholders

大株主

2020年3月31日時点	As of March 31, 2020	所有株式数 (千株)	持株比率
		Number of Shares Held (thousands)	Percentage of Shares Held (%)
大阪市	Osaka City	68,287	7.64%
日本マスタートラスト信託銀行(信託口)	The Master Trust Bank of Japan, Ltd. (Trust Account)	52,496	5.87%
日本トラスティ・サービス信託銀行(信託口)	Japan Trustee Services Bank, Ltd. (Trust Account)	36,889	4.13%
日本生命保険相互会社	Nippon Life Insurance Company	27,462	3.07%
神戸市	Kobe City	27,351	3.06%
関西電力持株会	Kansai Electric Power Employee Stockholder Program	19,154	2.14%
日本トラスティ・サービス信託銀行(信託口9)	Japan Trustee Services Bank, Ltd. (Trust Account 9)	18,661	2.09%
みずほ銀行	Mizuho Bank, Ltd.	17,378	1.94%
大阪市高速電気軌道株式会社	Osaka Metro Co., Ltd	15,461	1.73%
日本トラスティ・サービス信託銀行(信託口5)	Japan Trustee Services Bank, Ltd. (Trust Account 5)	15,445	1.73%

*当社の自己株式45,160千株は、上記の表から除いている。
*Excluding 45,160 thousand of treasury stock from the above table.