

3

Proactive Contributions to Development of Local Communities



CSR Action Principles

As a business operator closely linked with its local communities and lives of their inhabitants, the Kansai Electric Power Group fully recognizes that its own development is not conceivable without the development of the local communities associated with its business activities and therefore we will proactively contribute to the development of our local communities through initiatives to revitalize these communities and the local economy. Also with regard to our overseas business activities, we will strive to contribute to the development of the respective local communities with due consideration to local culture and practices.

Maintaining an ongoing community dialogue

Transmitting information with a positive attitude to local communities and maintaining open lines of communication

We established our Community Energy Division in June 2015 with a commitment "to create the future together through dialog." We are striving to meet the varied requests of the residents of our local communities with a positive attitude by maintaining close communication with all.

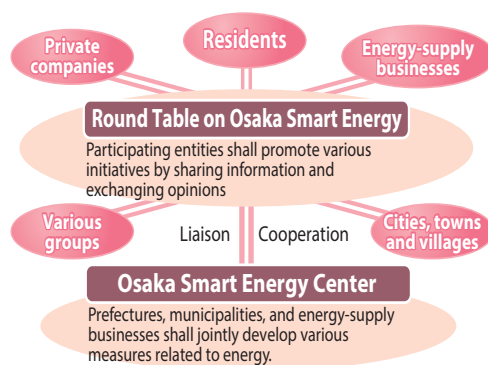
Participating in meetings of various energy-related organizations

We actively cooperate in devising solutions to various local challenges related to energy while participating in meetings of various energy-related organizations held by local governments. We also share information regarding energy in general.

Meeting record

Participation in the Round Table on Osaka Smart Energy

10 times



Active disclosure at administrative meetings and regular reporting meetings

We are participating in, for example, governmental assemblies such as the meetings of members of the Union of Kansai Governments and the Nara Prefecture Energy Conservation Conference. In addition to explaining the state of power supply and demand, we also receive a variety of opinions and otherwise exchanging information.



Nara Prefecture Energy Conservation Conference

Meeting record

Meeting of members of the Union of Kansai Governments

attended **3 times**, presented data **5 times**

Nara Prefecture Energy Conservation Conference

attended **2 times**, presented data **2 times**

Ordinary communication with government offices

We undertake mutual communication with government offices on a daily basis. When we are asked questions, we hold study groups, for example, to answer them conscientiously.

Meeting record

Clarifying promotional activities to local governments

5,500 times



Opinion exchange with government office

Initiatives to assist local communities

Efforts for regional stimulation

As the energy needs of customers and society at large have become increasingly diverse, Kansai Electric Power has been carefully monitoring trends to determine exact requirements. We seek to support regional revival and invigorate local economies with the goal of working with them as a valued partner to create the new future we envision.

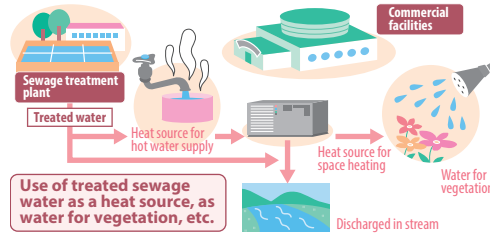
Contributing to the emergence of Smart Communities ¹

To meet the expectations of customers and local communities for regional revitalization, Kansai Electric Power is participating in the Smart Community efforts of local governments and other local entities aiming to increase energy efficiency in all areas and developing initiatives incorporating renewable energy. We are employing our accumulated expertise in the electric power industry and are engaged in a range of concrete initiatives to make this concept a reality.

Specifically, we are advancing, for example, new efforts that utilize the knowledge we have gained from participating in the areawide use of energy in the southern part of Expo Commemoration Park in Suita City, which utilizes solar power generation and storage batteries, and the Keihanna Eco City Next-Generation

Energy and Social Systems Demonstration Project, which uses water recovered from sewage both as a heat source and as a water resource in the Teppo-cho district of Sakai City.

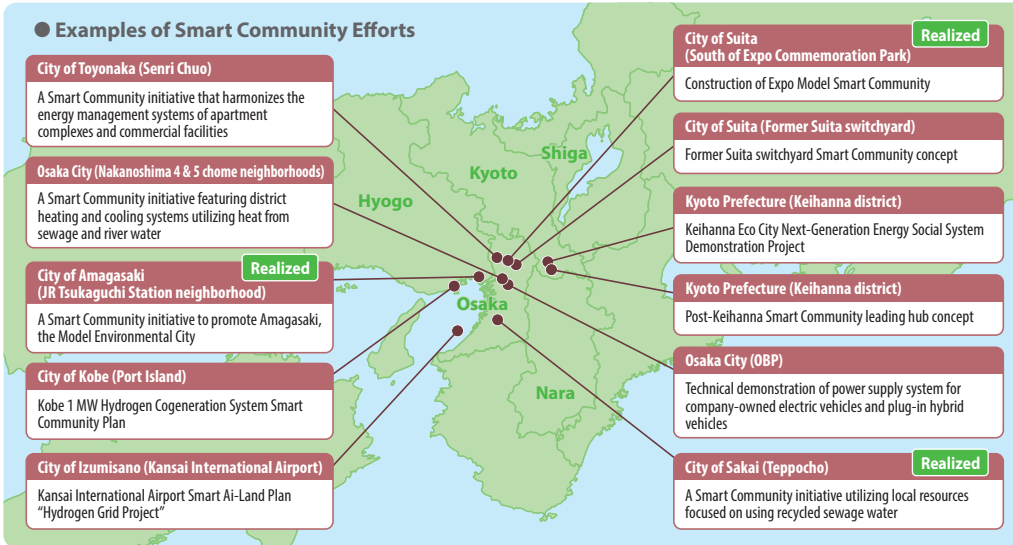
The Town's Concept of Utilizing Treated Sewage Water



¹ Number of smart communities that have realized this concept (As of the end of June 2016)

3

Examples of Smart Community Efforts



Community development activities in urban areas of Osaka ²

Kansai Electric Power has been making both infrastructure and organizational contributions to community development activities in urban Osaka. These include our activities on Nakanoshima Island in Osaka, where our head office is located.

Kansai Electric Power serves as the secretariat of the Round Table on the Future of Nakanoshima, an organization that examines prospects for further development and vitalization of Nakanoshima. The organization is promoting a variety of urban renewal initiatives such as the realization of the Nakanoshima Urban Renewal Concept formulated in 2013 in collaboration with 29 enterprises (as of June 2016) including entities holding land rights in the district.

Enterprise investment support activities

Seeking the sustained development of communities, we are cooperating with local governments and related locations and undertaking enterprise investment support activities in the Kansai region. For businesses from elsewhere in Japan that are looking for new places to locate, we introduce the industrial locations and local government incentive systems in the Kansai region through "Community Information," which is a magazine with information about the community. Another way that we are working to advance the Kansai region is by visiting businesses to make relevant proposals.

²



Overview of Nakanoshima (Kita-ku district of Osaka)

Contributing to the local community

As a business that is deeply rooted in local communities and is one member of these communities, our company continues to undertake activities that contribute to them, paying careful attention to the needs of their residents including our customers.

Inspection of electrical equipment at cultural properties

We work with fire departments to prevent fires at temples, shrines, and other cultural properties, including community centers designated as disaster refuges, by inspecting electrical equipment. We search for short circuits and electrical wiring abnormalities and provide instructions to customers regarding the safe use of their electrical equipment.



Inspecting electrical equipment at Sumiyoshi Shrine (Akashi City, Hyogo Prefecture)

Helping local residents beautify their surroundings

In addition to our activities with local communities, we are carrying out cleanup activities around our business locations, at tourist sites, centering on Kansai Electric Power Group Environment Month (June) and Customer Appreciation Month (November). In addition, we have engaged in beautification activities such as removing illegal advertisements and erasing graffiti.



Cleanup around Iwashimizu Hachimangu Shrine (Yawata City, Kyoto Prefecture)

Support for traditional cultural preservation and regional events

To contribute to regional development and vitalization, we are working to support traditional culture and regional events rooted in local communities in a variety of ways.



Volunteer participation in the Tenpyo Festival at Heijō-kyō (Nara City, Nara Prefecture)

Collabo Art 21 exhibit of art by handicapped persons

Since 2001, Kansai Electric Power has been holding the Collabo Art 21, an exhibit that provides an opportunity for individuals with disabilities to display their works. Visitors can appreciate the art and sense the potential of the artists. Works selected for exhibiting can also be seen on our website.



Exhibition of selected works (part of sponsorship activities for Persons with Disabilities Week)

Support for employees engaged in social contribution activities

To support employees engaged in community activities or volunteer programs, we established a volunteer time-off program, among other initiatives. We published a Social Contribution website on our company web portal that provides enhanced information on the activities of volunteers and various workplaces.

1 System

● Volunteer time-off program

This system allows employees, who participate in activities that contribute to society and meet fixed conditions, to take 50% or 100% of the time devoted to such activities as specially recognized time off, up to an annual limit.

● Volunteer sabbatical program

This program enables employees who have worked for the company for five years or more to take up to a year off in order to participate in long-term volunteer work for a public social welfare organization. In the case of the Japan Overseas Cooperation Volunteers, the maximum sabbatical period is two years and six months.

2 Operation of an in-house Social Contribution website

On our Social Contribution website, every employee can view in a single location volunteer information and examples of activities that contribute to society at other business places. They are also utilizing it as reference information for the activities at every business place.

1

- Volunteer time-off program

Participation:

66
instances totaling
158 days

- Volunteer sabbatical program (Fiscal 1992–2015 results)

Approved:

17 instances